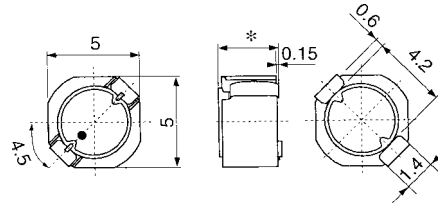


TYPE D52LC

Frequency Range: 0.1 - 1MHz
 Inductance Range: 1.2 - 100 μ H

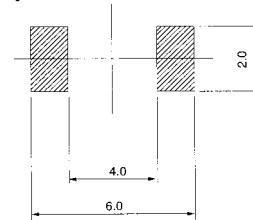


* : D52LC: 2.0max. / D53LC: 3.0max.

Unit: mm

Features

- Low profile (2.0mm max.)
- Magnetically shielded
- Available on tape and reel for auto-insertion
- Suitable for reflow soldering

Recommended patterns:

Unit: mm

STANDARD PARTS SELECTION GUIDE

- (1) Inductance is measured by LCR-meter 4284A (HP) or equivalent.
- (2) DC Resistance is measured by Digital Multimeter TR6871 (Advantest) or equivalent.
- (3) Maximum allowable DC current is that which causes a 30% inductance reduction from the initial value, or coil temperature to rise by 40°C, whichever is smaller. (Reference ambient temperature 20°C).

TYPE D52LC

| TOKO Part Number | Lo (μ H) | Inductance | | DC Resistance Spec ($m\Omega$) max. | Rated DC Current ⁽³⁾ | |
|------------------------|------------------|----------------|---------------------|---|---------------------------------|---|
| | | Tolerance % | Test Freq. (kHz) | | $\Delta L/L=30\%$ (A) max. | $\Delta T=40^\circ\text{C}$ (A) max. |
| A914BYW-1R2M=P3 | 1.2 | ± 20 | 100 | 44 | 2.15 | 2.29 |
| A914BYW-2R2M=P3 | 2.2 | ± 20 | 100 | 59 | 1.63 | 1.64 |
| A914BYW-3R5M=P3 | 3.5 | ± 20 | 100 | 73 | 1.34 | 1.45 |
| A914BYW-4R7M=P3 | 4.7 | ± 20 | 100 | 87 | 1.14 | 1.22 |
| A914BYW-6R8M=P3 | 6.8 | ± 20 | 100 | 105 | 0.95 | 1.10 |
| A914BYW-100M=P3 | 10 | ± 20 | 100 | 150 | 0.76 | 0.87 |
| A914BYW-150M=P3 | 15 | ± 20 | 100 | 210 | 0.63 | 0.72 |
| A914BYW-220M=P3 | 22 | ± 20 | 100 | 275 | 0.56 | 0.66 |
| A914BYW-330M=P3 | 33 | ± 20 | 100 | 455 | 0.44 | 0.48 |
| A914BYW-470M=P3 | 47 | ± 20 | 100 | 730 | 0.36 | 0.35 |
| A914BYW-680M=P3 | 68 | ± 20 | 100 | 935 | 0.30 | 0.33 |
| A914BY-101M=P3 | 100 | ± 20 | 100 | 1500 | 0.23 | 0.24 |

Note: =P3 is added to each part number to indicate tape and reel packaging.

www.DataSheet4U.com