

OEM ZIP DIP Sockets



- BeCu contacts assure continuity with very short path to P.C. trace
- Contact design prevents solder bridging and wicking
- Zero insertion/extraction force achieved with simple cam rotation using a screwdriver
- For use where package field replacement or re-programming is required for DIP's
- Socket contact point of .110" (2.79 mm) below top surface of socket
- Pin counts available from 14 through 64 leads on .100" (2.54 mm) centers

Date Issued: November 1, 1999

TS-0360-11
Sheet 1 of 2

Physical

Insulation

Material: Glass Filled Polyetherimide (PEI)

Flammability: UL 94V-0

Color: Black

Marking: Raised Letters: Textool/3M Logo & Part Identification

Contact

Material: Beryllium Copper

Plating

Underplate: 75 m^l [1.91 mm] Copper – MIL-C-14550

Wiping Area & Solder Tails: 250 m^l [6.35 mm] Tin – MIL-T -10727A

Optional Plating

Underplate: 50 m^l [1.27 mm] Nickel

Wiping Area & Solder Tails: Gold Flash

Cam

Material: Zinc

Electrical

Current Rating: 1 A

Insulation Resistance: $> 1 \times 10^{12}$ Wat 500 Vdc

Withstanding Voltage: 1000 Vrms at Sea Level

Mechanical

Durability: 100 actuations

Normal Force: 150 grams average per contact

Environmental

Temperature Rating Operating: - 55 °C to +105 °C

UL File No.: E68080

3M Electronic Handling and Protection Division

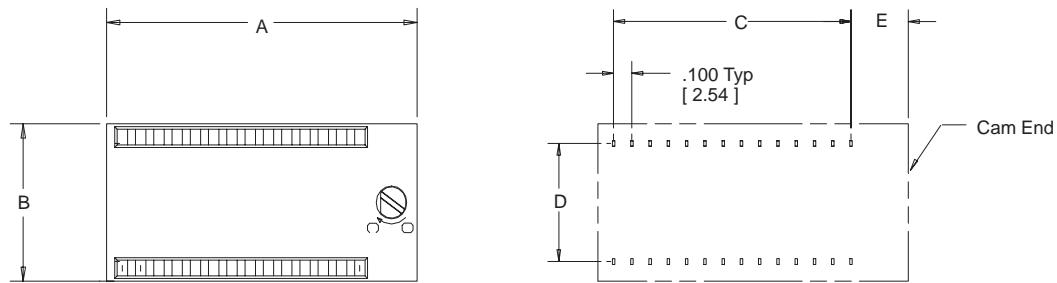
6801 River Place Blvd.
Austin, TX 78726-9000

For technical, sales or ordering information www.DataSheet4U.com
or visit our website: <http://www.3M.com/ehpd>

OEM DIP Sockets

Lead Count	Dimensions				
	A	B	C	D	E
14	1.00 [25.4]	.50 [12.7]	.600 [15.24]	.300 [7.62]	.318 [8.08]
16	1.10 [27.9]	.50 [12.7]	.700 [17.78]	.300 [7.62]	.318 [8.08]
20	1.30 [33.0]	.50 [12.7]	.900 [22.86]	.300 [7.62]	.318 [8.08]
24	1.50 [38.1]	.80 [20.3]	1.100 [27.94]	.600 [15.24]	.318 [8.08]
28	1.70 [43.2]	.80 [20.3]	1.300 [33.02]	.600 [15.24]	.318 [8.08]
32	1.90 [48.3]	.80 [20.3]	1.500 [38.1]	.600 [15.24]	.318 [8.08]
40	2.30 [58.4]	.80 [20.3]	1.900 [48.26]	.600 [15.24]	.318 [8.08]
48	2.74 [69.6]	.80 [20.3]	2.300 [58.42]	.600 [15.24]	.360 [9.14]
64	3.54 [89.9]	1.10 [27.9]	3.100 [78.74]	.900 [22.86]	.360 [9.14]

www.DataSheet4U.com



PC Board Pattern



Inch
[mm]

Tolerance Unless Noted			
	.0	.00	.000
	±.1	±.01	±.005

[] Dimensions for Reference only

Notes:

- When soldering to a P.C. Board the contacts must be in the **open position**. Do not crimp leads for mounting during soldering.
- The cam mechanism in these sockets has been designed to operate with a torque level of 2 in-lbs max. Exceeding this torque level could cause damage to the socket.

Ordering Information

Lead Count	Part Number	Distance Between Rows
14	214-4839-00-3303	.300 [7.62]
16	216-4840-00-3303	.300 [7.62]
20	220-4842-00-3303	.300 [7.62]
24	224-4844-00-3303	.600 [15.24]
28	228-1296-00-3303	.600 [15.24]
32	232-1297-00-3303	.600 [15.24]
40	240-4846-00-3303	.600 [15.24]
48	248-5201-00-3303	.600 [15.24]
64	264-5200-00-3303	.900 [22.86]

TS-0360-11
Sheet 2 of 2

3M Electronic Handling and Protection Division

6801 River Place Blvd.
Austin, TX 78726-9000

For technical, sales or ordering information call 800-328-0411
www.DataSheet4U.com
or visit our website: <http://www.3m.com/enpd>