

Surface Mount High Speed Switching Diode

COMCHIP
SMD DIODE SPECIALIST

1SS400-G (RoHS Device)

Voltage: 90 Volts

Current: 225 mA



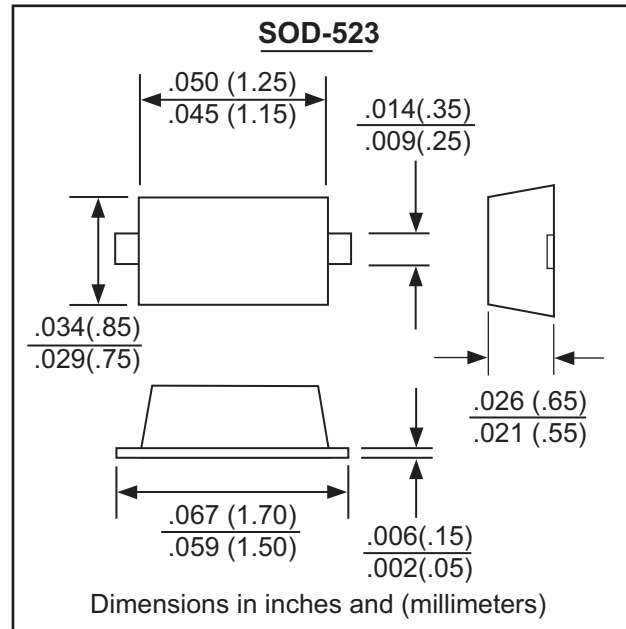
This device is an extremely fast switching diodes housed in the ultra-small SOD-523 package. Ideal for applications like mobile phones, hand-held computers and high speed switching applications.

Features:

- Small surface mounting type
- High current capability
- Low reverse leakage current
- High surge current capability

Applications:

- Mobile phones and accessories
- Hand-held computers
- High Speed Switching Applications



Maximum Ratings and Electrical Characteristics, Single Diode @ T_A=25°C

Parameter	Symbol	Limits	Unit
Peak reverse voltage	V _{RM}	90	V
DC reverse voltage	V _R	80	V
Peak forward current	I _{FM}	225	mA
Mean rectifying current	I _O	100	mA
Surge current (1s)	I _{SURGE}	500	mA
Junctions temperature	T _J	125	°C
Storage temperature	T _{stg}	-55~+125	°C

Electrical Ratings @ T_A=25°C

Parameter	Symbol	Max.	Unit	Conditions
Forward voltage	V _F	1.2	V	I _F =100mA
Reverse current	I _R	0.1	μA	V _R =80V
Capacitance between terminals	C _T	3.0	pF	C _T =0.5V, f=1MHZ
Reverse recovery time	T _{rr}	4	ns	V _R =6V, I _F =100mA, R _L =100 OHM

"-G" suffix designated RoHS compliant version

Surface Mount Switching Diode

1SS400-G (RoHS Device)

● Electrical characteristic curves ($T_a = 25^\circ\text{C}$)

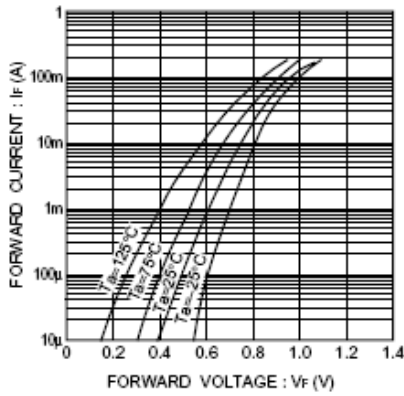


Fig.1 Forward characteristics

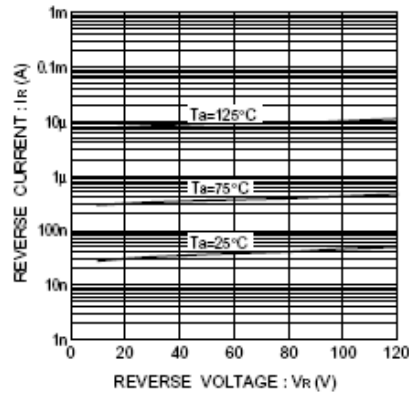


Fig.2 Reverse characteristics

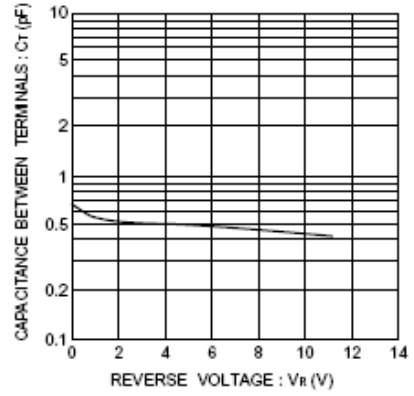


Fig.3 Capacitance between terminals

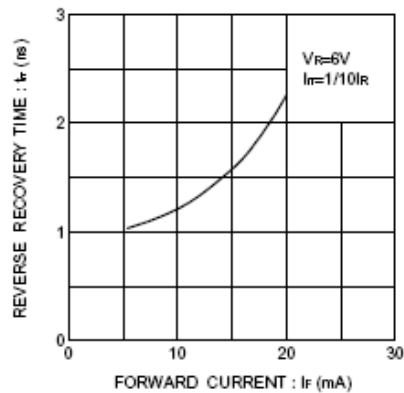


Fig.4 Reverse recovery time characteristics

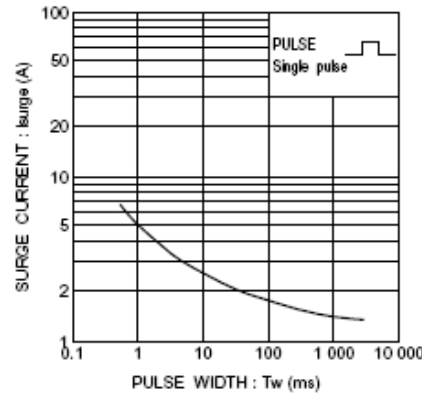


Fig.5 Surge current characteristics

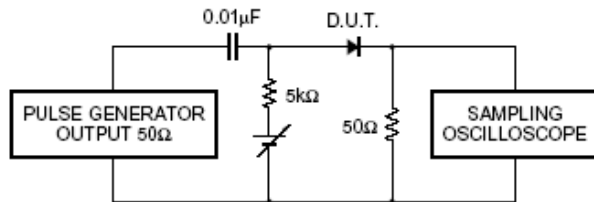


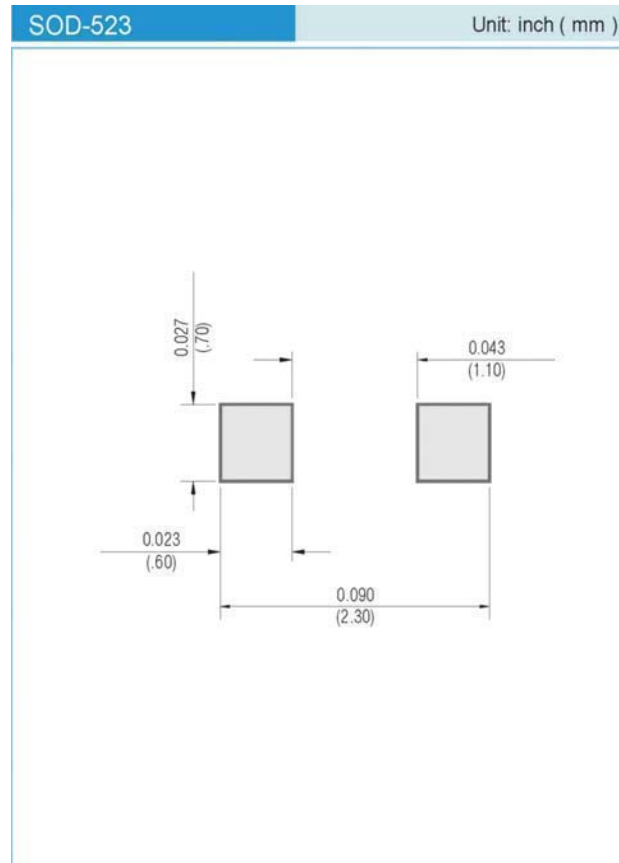
Fig.6 Reverse recovery time (t_r) measurement circuit

Surface Mount Switching Diode

1SS400-G (RoHS Device)



PAD DIMENSIONS



ORDERING INFORMATION

1SS400-G T/R7 - 7" reel, 3K units per reel

1SS400-G T/R13 - 13" reel, 10K units per reel