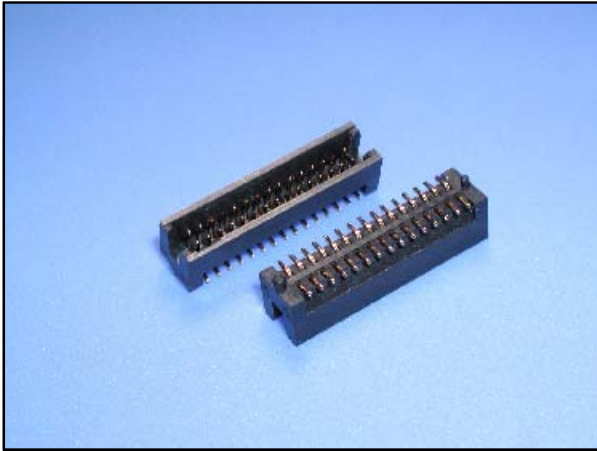


1.27X1.27MM BOX HEADER SMD TYPE



SPECIFICATION:

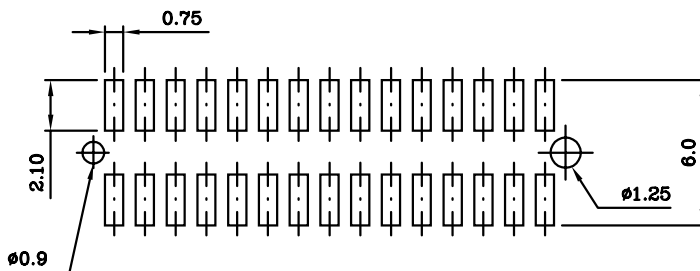
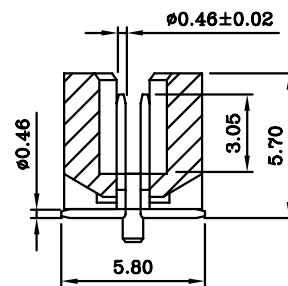
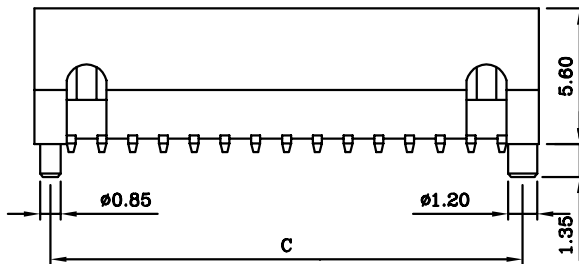
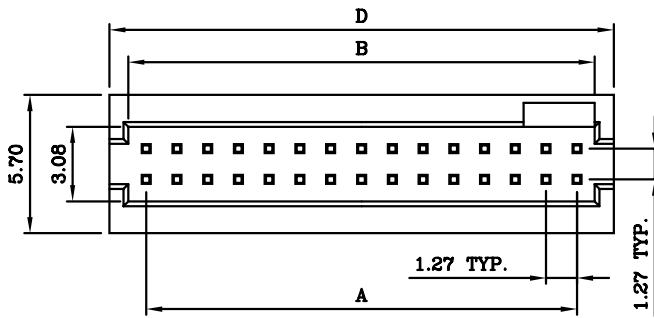
- Current Rating:** 1.0A AC,DC
- Voltage Rating:** 50V AC,DC
- Contact Resistance:** 20M ohm max
- Insulator Resistance:** 500M ohm Min.
- Withstanding Voltage:** 500V AC/minute
- Temperature range:** -25°C to +125°C.

MATERIAL:

- Insulator:** Polyester UL94V-0
- Contact:** Phosphor Bronze
- Finish:** Tin Plated

FINISH:

- Shell:** Tin plated.
- Contact:** Gold plated on contact area & 100u" Min. Tin/lead plated on soldering end over 50u" Min. Nickel under-plating.
- Boardlocks:** Tin/lead plated on soldering end over Nickel under-plating.
- Threaded Inserts:** Nickel plated.



2198SM-XX-PG

WITH PEG
NO. OF POSITIONS
SMD TYPE

2*50	62.23	63.90	65.27	66.54
2*45	55.88	57.55	58.92	60.19
2*40	49.53	51.20	52.57	53.84
2*35	43.18	44.85	46.22	47.49
2*30	36.83	38.50	39.87	41.14
2*25	30.48	32.15	33.52	34.79
2*22	26.67	28.34	29.71	30.98
2*20	24.13	25.80	27.17	28.44
2*15	17.78	19.45	20.82	22.09
2*12	13.97	15.64	17.01	18.28
2*10	11.40	13.07	14.44	15.71
2*5	5.08	6.75	8.12	9.39
SIZE	A	B	C	D