

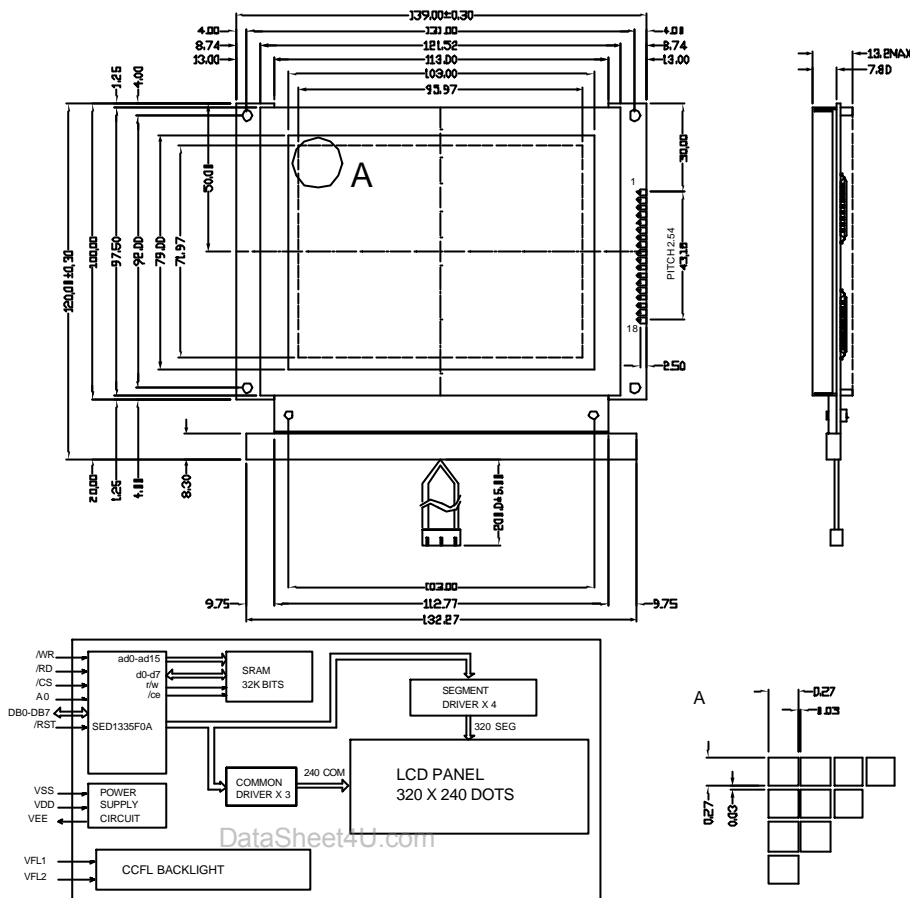
# DM320240A

ORIENT DISPLAY  2001

320x240  
DOTS

## OPTIONS

- \* LCD PANEL
- STN
- FSTN
- \* View Angle
- 6H
- \* Backlight
- CCFL



MECHANICAL SPECIFICATIONS		
ITEM	SPECIFICATION	UNIT
Overall Size	139.0Wx120.0Hx13.2T	mm
Viewing Area	103.0Wx79.0H	mm
Dot Number	320Wx240H	
Dot Size	0.27Wx0.27H	mm
Dot Pitch	0.3Wx0.3H	mm

PIN ASSIGNMENT		
PIN	SYMBOL	FUNCTION
1	Vss	Power Supply(GND)
2	Vdd	Power Supply(+5V)
3	Vo	Contrast Adjust
4	/WR	Data Write
5	/RD	Data Read
6	/CS	Chip Select
7	A0	Data Type Select
8	/RST	Reset
9-16	DB0-DB7	Data Bus Line
17	NC	No Connect
18	VEE	Negative Voltage Output

PIN	SYMBOL	FUNCTION
19	VFL1	Power Supply For CCFL
20	NC	Power Supply(+5V)
21	VFL2	Power Supply For CCFL

ABSOLUTE MAXIMUM RATINGS				
ITEM	SYMBOL	MIN.	MAX.	UNIT
Power Supply (Logic)	Vdd	-0.3	7.0	V
Power Supply (LCD)	Vo	Vdd-30.0	Vdd+0.3	V
Input Voltage	Vi	-0.3	Vdd	V
Operating Temperature	Topr	0	50	°C
Storage Temperature	Tstg	-20	70	°C

ELECTRICAL CHARACTERISTICS(Ta=25°C, Vdd=5V±0.25V)					
ITEM	SYMBOL	MIN.	MIN.	MAX.	UNIT
Power Supply(Logic)	Vdd	4.5	5.0	5.5	V
Supply Current	Idd	—	11.9	20	mA
LCD Driving Voltage	Vdd-Vo	23.7	24.9	26.1	V
Input Voltage "H"	Vih	2.2	—	Vdd	V
Input Voltage "L"	Vil	—	—	0.6	V
Output Voltage "H"	Voh	2.4	—	—	V
Output Voltage "L"	Vol	—	—	0.4	V