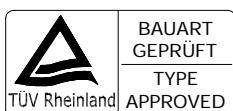


AC 200 Series New Product

200 Watt Single Output U Frame AC-DC Modules with PFC

www.DataSheet4U.com



1400 PROVIDENCE HIGHWAY • BUILDING 2
NORWOOD, MASSACHUSETTS 02062-5015

FEATURES	SPECIFICATIONS																																							
<ul style="list-style-type: none"> ■ 1.5" Low Profile, 4"X6" Footprint ■ Universal Input : 90 ~ 264Vac ■ Active PFC Meets EN61000-3-2 ■ EMI Meets CISPR/FCC Class B ■ High Efficiency at 80% Typical ■ Current Share ■ Remote Voltage Sense ■ AC OK Signal (Logic High) ■ DC OK Signal (Logic High) ■ PS ON/OFF Remote Control (Inhibit PSU by adding Logic High) <p>NOTE</p> <p>1: Optional function can be added when ordering: Top Cover with Fan (when forced air is needed)</p> <p>2: Add a 0.1uF ceramic capacitor and a 47uF E.L. capacitor to output for Ripple & Noise measuring @20MHz BW.</p> <p>3: Voltage accuracy is set at 60% rated load and 25°C Ta.</p> <p>4: Line regulation is measured from High Line to Low Line with rated load.</p> <p>5: Load regulation is measured at 60%±40% rated load.</p> <p>6: Dimensions tolerance : +/- 1mm.</p> <p>7: Connectors: CN1(AC Input) : Molex 5273-05A or equivalent CN2(DC Output) : Molex 38700-7504 or equivalent CN6(Signals) : Molex 70247-10 or equivalent CN3,CN4,CN5(FAN) : Molex 5045-02A or equivalent</p>	<ul style="list-style-type: none"> ■ Input Characteristics <table border="1" style="width: 100%; border-collapse: collapse;"> <tr> <td style="width: 60%;">AC Input Voltage</td> <td>90 ~ 264Vac</td> </tr> <tr> <td>Frequency</td> <td>47 to 63Hz</td> </tr> <tr> <td>Inrush Current</td> <td>60A Max.</td> </tr> <tr> <td>EMI</td> <td>CISPR/FCC Class B</td> </tr> <tr> <td>Isolation</td> <td>Input to output = 4,242Vdc</td> </tr> <tr> <td>Leakage Current</td> <td>3.5mA max.</td> </tr> </table> <ul style="list-style-type: none"> ■ Output Characteristics <table border="1" style="width: 100%; border-collapse: collapse;"> <tr> <td style="width: 60%;">Total Rated Output Power</td> <td>200W (with 30CFM air flow or optional fan)</td> </tr> <tr> <td>Current Share</td> <td>Single wire current sharing</td> </tr> <tr> <td>Remote Voltage Sense</td> <td>Compensates for wire voltage drop</td> </tr> <tr> <td>Hold-up Time</td> <td>16mS typ.</td> </tr> <tr> <td>Over Voltage Protection</td> <td>Recycle AC input to restart</td> </tr> <tr> <td>Over Temperature Protection</td> <td>Auto Recovery</td> </tr> <tr> <td>Short Circuit Protection</td> <td>Auto Recovery</td> </tr> </table> <ul style="list-style-type: none"> ■ Environmental Characteristics <table border="1" style="width: 100%; border-collapse: collapse;"> <tr> <td style="width: 60%;">Operating Temperature</td> <td>0 ~ 70 degrees C</td> </tr> <tr> <td></td> <td>50~70 C with 2.5%/ degrees C derating</td> </tr> <tr> <td></td> <td>PSU will be in thermal protection for exceeding the rated power output or the operating temperature</td> </tr> <tr> <td>Storage Temperature</td> <td>-20 ~ 85 C</td> </tr> </table> <ul style="list-style-type: none"> ■ Mechanical Outline <table border="1" style="width: 100%; border-collapse: collapse;"> <tr> <td style="width: 60%;">Standard U Frame</td> <td>150mmx100mmx38.1mm (5.91"*3.94"*1.5")</td> </tr> <tr> <td>With Optional Fan</td> <td>150mmx101.6mmx58.5mm (5.91"*4"*2.3")</td> </tr> </table>		AC Input Voltage	90 ~ 264Vac	Frequency	47 to 63Hz	Inrush Current	60A Max.	EMI	CISPR/FCC Class B	Isolation	Input to output = 4,242Vdc	Leakage Current	3.5mA max.	Total Rated Output Power	200W (with 30CFM air flow or optional fan)	Current Share	Single wire current sharing	Remote Voltage Sense	Compensates for wire voltage drop	Hold-up Time	16mS typ.	Over Voltage Protection	Recycle AC input to restart	Over Temperature Protection	Auto Recovery	Short Circuit Protection	Auto Recovery	Operating Temperature	0 ~ 70 degrees C		50~70 C with 2.5%/ degrees C derating		PSU will be in thermal protection for exceeding the rated power output or the operating temperature	Storage Temperature	-20 ~ 85 C	Standard U Frame	150mmx100mmx38.1mm (5.91"*3.94"*1.5")	With Optional Fan	150mmx101.6mmx58.5mm (5.91"*4"*2.3")
AC Input Voltage	90 ~ 264Vac																																							
Frequency	47 to 63Hz																																							
Inrush Current	60A Max.																																							
EMI	CISPR/FCC Class B																																							
Isolation	Input to output = 4,242Vdc																																							
Leakage Current	3.5mA max.																																							
Total Rated Output Power	200W (with 30CFM air flow or optional fan)																																							
Current Share	Single wire current sharing																																							
Remote Voltage Sense	Compensates for wire voltage drop																																							
Hold-up Time	16mS typ.																																							
Over Voltage Protection	Recycle AC input to restart																																							
Over Temperature Protection	Auto Recovery																																							
Short Circuit Protection	Auto Recovery																																							
Operating Temperature	0 ~ 70 degrees C																																							
	50~70 C with 2.5%/ degrees C derating																																							
	PSU will be in thermal protection for exceeding the rated power output or the operating temperature																																							
Storage Temperature	-20 ~ 85 C																																							
Standard U Frame	150mmx100mmx38.1mm (5.91"*3.94"*1.5")																																							
With Optional Fan	150mmx101.6mmx58.5mm (5.91"*4"*2.3")																																							

Model	Output Voltage	Output Current (A)		Ripple & Noise	Voltage Accuracy	Line Reg.	Load Reg.
		Rated	Min.				
AC200-033	+3.3V	40.0	0	1%	±1%	±1%	±1%
AC200-050	+5.0V	40.0	0	1%	±1%	±1%	±1%
AC200-120	+12V	16.7	0	1%	±1%	±1%	±1%
AC200-150	+15V	13.4	0	1%	±1%	±1%	±1%
AC200-180	+18V	11.2	0	1%	±1%	±1%	±1%
AC200-240	+24V	8.4	0	1%	±1%	±1%	±1%
AC200-280	+28V	7.2	0	1%	±1%	±1%	±1%
AC200-300	+30V	6.7	0	1%	±1%	±1%	±1%
AC200-360	+36V	5.6	0	1%	±1%	±1%	±1%
AC200-480	+48V	4.2	0	1%	±1%	±1%	±1%

Typical @25°C, 230Vac and 60% rated load, unless otherwise specified.

AC 200 Series New Product

www.DataSheet4U.com 200 Watt Single Output U Frame AC-DC Modules with PFC



(Safety approvals pending)



BAUART
GEPRÜFT
TYPE
APPROVED



1400 PROVIDENCE HIGHWAY • BUILDING 2
NORWOOD, MASSACHUSETTS 02062-5015

DRAWINGS: (Preliminary)

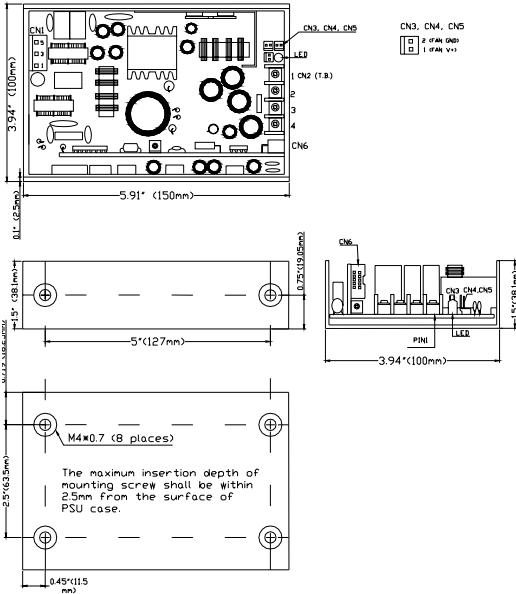


Fig.1. Mechanical Outline of AC200
Unit: inch (mm)

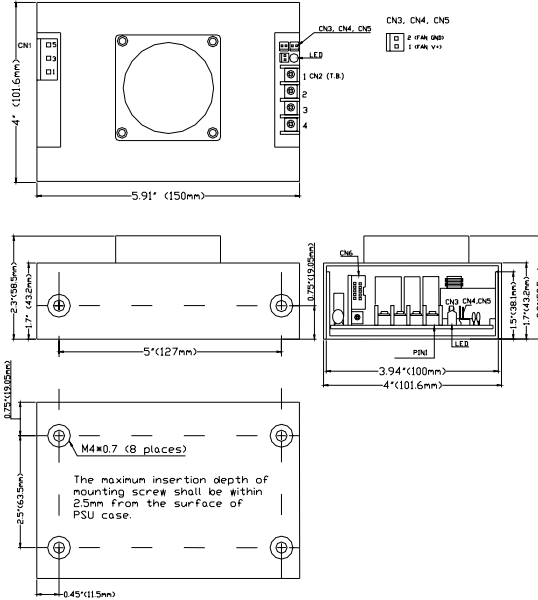


Fig.2. Mechanical Outline of AC200-F (With Optional Fan)
Unit: inch (mm)

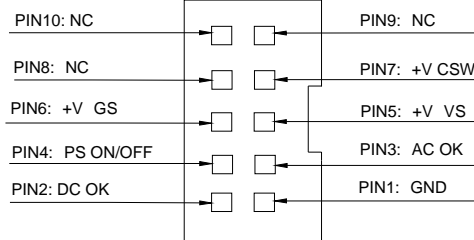
PIN CONNECTION:

CN1 (AC Input)	
PIN NO.	ASSIGNMENT
1	Earth Ground
2	NC
3	Neutral
4	NC
5	Line

CN2 (DC Output, T.B.)	
PIN NO.	ASSIGNMENT
1	+V
2	+V
3	PWR GND
4	PWR GND

CN3,CN4,CN5 (FAN Output)	
PIN NO.	ASSIGNMENT
1	+12V(FAN)
2	GND(FAN)

CN6(Signals)



Note: VS means Remote Sense "+"

GS means Remote Sense "Return"

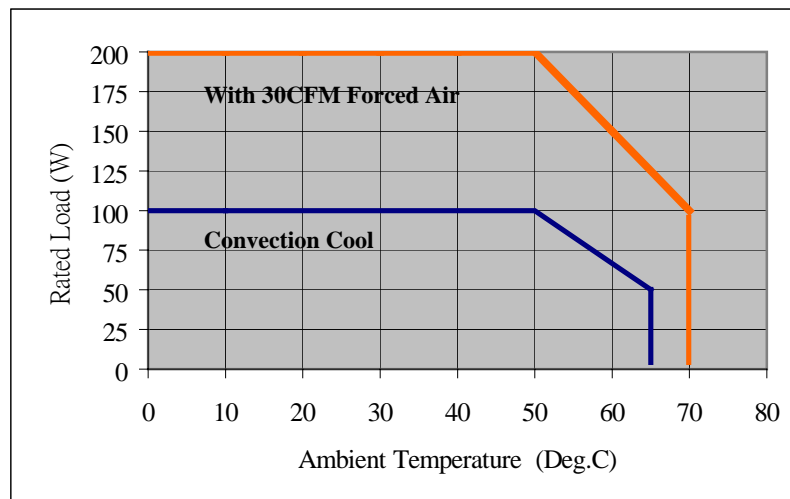


Fig.3. Output Derating Curve