

# Surface Mount Frequency Mixer

Level 17 (LO Power +17 dBm) 0.5 to 500 MHz

## ADE-1H+ ADE-1H



CASE STYLE: CD636  
PRICE: \$4.95 ea. QTY (10-49)

**+ RoHS compliant in accordance  
with EU Directive (2002/95/EC)**

The +Suffix identifies RoHS Compliance. See our web site  
for RoHS Compliance methodologies and qualifications.

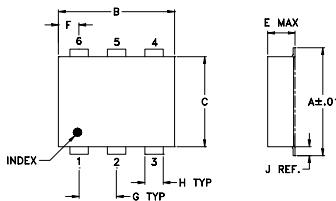
### Maximum Ratings

Operating Temperature	-40°C to 85°C
Storage Temperature	-55°C to 100°C
RF Power	200mW
IF Current	40mA

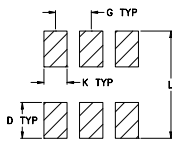
### Pin Connections

LO	6
RF	3
IF	2
GROUND	1,4,5

### Outline Drawing



### PCB Land Pattern

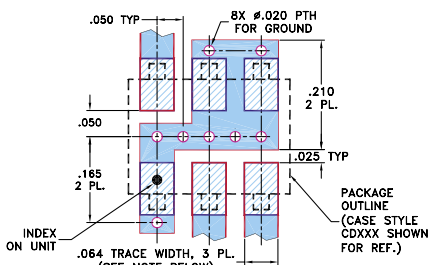


Suggested Layout,  
Tolerance to be within ±.002

### Outline Dimensions (inch/mm)

A	B	C	D	E	F	G
.272	.310	.220	.100	.162	.055	.100
6.91	7.87	5.59	2.54	4.11	1.40	2.54
H	J	K	L	wt		
.030	.026	.065	.300	grams		
0.76	0.66	1.65	7.62	0.25		

### Demo Board MCL P/N: TB-03 Suggested PCB Layout (PL-052)



NOTES: 1. TRACE WIDTH IS SHOWN FOR ROGERS RO4350B WITH DIELECTRIC THICKNESS .030" ± .002"; COPPER: 1/2 OZ. EACH SIDE. FOR OTHER MATERIALS TRACE WIDTH MAY NEED TO BE MODIFIED.  
2. BOTTOM SIDE OF THE PCB IS CONTINUOUS GROUND PLANE.

- DENOTES PCB COPPER LAYOUT WITH SMOBC (SOLDER MASK OVER BARE COPPER)
- DENOTES COPPER LAND PATTERN FREE OF SOLDER MASK

### Features

- low conversion loss, 5.3 dB typ.
- excellent L-R isolation, 52 dB typ.
- excellent IP3, 23 dBm typ.
- aqueous washable
- protected by U.S. Patent 6,133,525

### Applications

- VHF/UHF receivers

### Electrical Specifications

FREQUENCY (MHz)		CONVERSION LOSS (dB)				LO-RF ISOLATION (dB)			LO-IF ISOLATION (dB)			IP3 at center band (dBm)						
LO/RF	IF	Mid-Band		Total	L	M	U	L	M	U								
$f_L$ - $f_U$		$\bar{X}$	$\sigma$	Max.	Max.	Typ.	Min.	Typ.	Min.	Typ.	Min.	Typ.						
0.5-500	DC-500	5.3	0.20	6.8	8.0	65	50	52	35	40	26	53	40	42	25	32	20	23

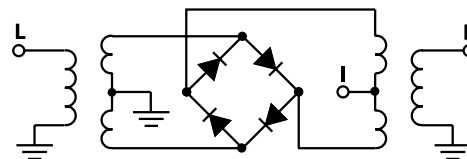
1 dB COMP.: +14 dBm typ.

L = low range [ $f_L$  to  $10 f_L$ ]  
M = mid band [ $2 f_L$  to  $f_U/2$ ]  
U = upper range [ $f_U/2$  to  $f_U$ ]

### Typical Performance Data

Frequency (MHz)		Conversion Loss (dB)	Isolation L-R (dB)	Isolation L-I (dB)	VSWR RF Port (:1)	VSWR LO Port (:1)
RF	LO	LO +17dBm	LO +17dBm	LO +17dBm	LO +17dBm	LO +17dBm
0.50	30.50	5.92	65.80	53.70	1.65	1.54
1.00	31.00	5.41	65.80	53.40	1.43	1.54
2.00	32.00	5.22	65.70	52.70	1.34	1.55
5.00	35.00	4.88	64.90	51.90	1.32	1.55
10.00	40.00	4.71	63.50	50.80	1.30	1.54
50.00	80.00	4.81	55.90	43.90	1.21	1.63
58.92	88.92	4.80	55.70	42.90	1.22	1.59
100.00	130.00	4.81	53.30	39.50	1.21	1.54
117.74	147.74	4.78	52.70	39.00	1.19	1.65
176.55	206.55	4.88	57.10	36.20	1.23	1.59
200.00	230.00	5.04	55.70	35.90	1.22	1.70
235.37	265.37	5.04	55.80	35.10	1.20	1.70
250.00	280.00	5.16	56.50	34.80	1.17	1.67
300.00	330.00	5.34	51.00	33.80	1.14	1.88
353.01	383.01	5.44	42.30	32.30	1.13	1.80
400.00	430.00	5.46	39.60	29.70	1.12	2.08
411.82	441.82	5.44	39.80	29.30	1.12	2.03
450.00	480.00	5.78	40.00	29.40	1.15	2.06
470.00	500.00	5.96	39.50	30.70	1.19	2.23
500.00	530.00	6.47	38.60	31.70	1.27	2.20

### Electrical Schematic



**Mini-Circuits®**  
ISO 9001 ISO 14001 CERTIFIED

P.O. Box 350166, Brooklyn, New York 11235-0003 (718) 934-4500 Fax (718) 332-4661 For detailed performance specs & shopping online see Mini-Circuits web site



The Design Engineers Search Engine Provides ACTUAL Data Instantly From MINI-CIRCUITS At: [www.minicircuits.com](http://www.minicircuits.com)

ALL NEW  
**minicircuits.com**

www.DataSheet4U.com

REV. E  
M102713  
ADE-1H  
ED 7895/1  
ML010CP/AM  
061227  
Page 1 of 2

## Performance Charts

