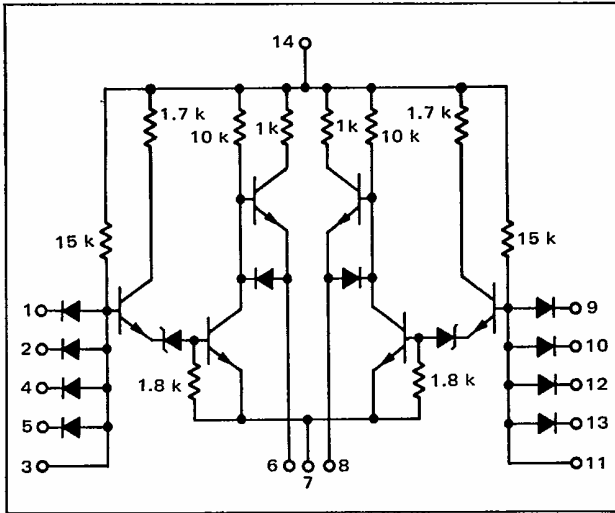


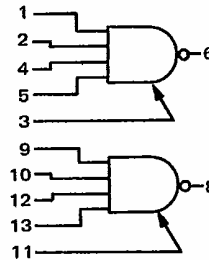
MC662

T-52-07

ISSUE A



This device consists of two expandable 4-input NAND line drivers with active output pullup. This device allows fan-out to 30 MHTL gates and drives large capacitive loads.



Positive Logic 6 = 1 • 2 • 4 • 5 • [3]

Input Loading Factor = 1
Output Loading Factor = 30

Propagation Delay Time = 140 ns typ
Typical Total Power Dissipation
Inputs High = 180 mW typ/pkg
Input Low = 26 mW typ/pkg

ELECTRICAL CHARACTERISTICS

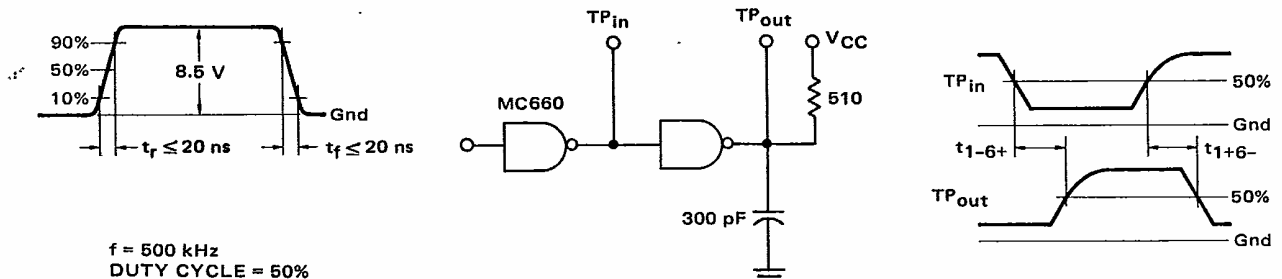
Test procedures are shown for one driver only. The other driver is tested in the same manner.

TEST CURRENT/VOLTAGE VALUES (All Temperatures)										
mA		Volts								
I_{OL}	I_{OH}	V_{IL}	V_{IH}	V_F	V_R	V_X	V_{CEX}	V_{CC}	V_{CCL}	V_{CCH}
36.0	-0.09	6.50	8.50	1.5	16.0	7.20	16.0	15.0	14.0	16.0

Characteristic	Symbol	Pin Under Test	MC662 Test Limits						Unit	TEST CURRENT/VOLTAGE APPLIED TO PINS LISTED BELOW:												
			-30°C		+25°C		+75°C			I_{OL}	I_{OH}	V_{IL}	V_{IH}	V_F	V_R	V_X	V_{CEX}	V_{CC}	V_{CCL}	V_{CCH}	Gnd	
			Min	Max	Min	Max	Min	Max														
Output Voltage	V_{OL}	6	-	1.5	-	1.5	-	1.5	Vdc	6	-	-	1, 2, 4, 6	-	-	-	-	-	14	-	7	
	V_{OH}	6	-	-	12.5	-	12.5	-		-	6	1	-	-	-	-	2, 4, 5	14	-	-		
Short-Circuit Current	I_{SC}	6	-	-	-10.0	-25.0	-10.0	-25.0	mAdc	-	-	-	-	-	-	-	-	-	-	14	1, 6, 7	
		1	-	-	-	2.0	-	2.0	μ Adc	-	-	-	-	1	-	-	-	-	14	-	2, 3, 4, 5, 7	
		2	-	-	-	-	-	-		-	-	-	-	2	-	-	-	-	-	-	-	1, 3, 4, 5, 7
		4	-	-	-	-	-	-		-	-	-	-	4	-	-	-	-	-	-	-	1, 2, 4, 5, 7
Reverse Current	I_R	5	-	-	-	-	-	-	μ Adc	-	-	-	-	5	-	-	-	-	-	-	-	1, 2, 3, 4, 7
		6	-	-	-	100	-	100	μ Adc	-	-	-	-	-	-	6, 14	-	-	-	-	1, 7	
Forward Current	I_F	1	-	-	-	-1.20	-	-1.20	mAdc	-	-	-	-	1	2, 4, 5	-	-	-	-	14	7	
		2	-	-	-	-	-	-		-	-	-	2	1, 4, 5	-	-	-	-	-	-	-	
		4	-	-	-	-	-	-		-	-	-	4	1, 2, 5	-	-	-	-	-	-	-	-
		5	-	-	-	-	-	-		-	-	-	5	1, 2, 4	-	-	-	-	-	-	-	-
Power Drain Current (Total Device)	I_{CCL}	14	-	-	-	4.0	-	-	mAdc	-	-	-	-	-	-	-	-	-	14	-	1, 2, 4, 5, 7, 9, 10, 12, 13	
		I_{CCH}	14	-	-	-	17	-	-	mAdc	-	-	-	-	-	-	-	-	-	14	-	7
Switching Times	t_{1-6+} t_{1+6-}	6	-	-	-	250	-	-	ns	Pulse In	Pulse Out	-	-	-	-	-	-	-	14	-	7	
		6	-	-	-	100	-	-	ns	1	6	-	-	-	-	-	-	-	14	-	7	

Pins not listed are left open.

SWITCHING TIMES TEST CIRCUIT AND WAVEFORMS



See General Information section for packaging.