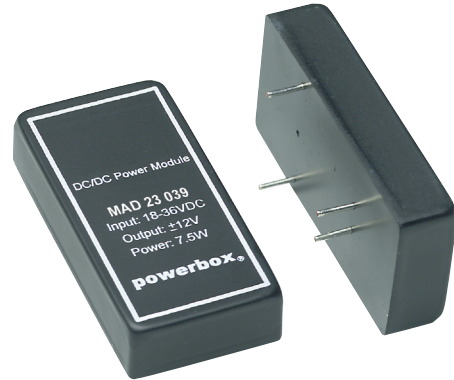


MAD 23 Series

5 - 7.5 W SINGLE & DUAL OUTPUT DC/DC INDUSTRIAL

Features

- **2:1 Input range**
- **Meet EN55022 class B**
- **1500 VDC isolation**
- **Efficiency to 82 %**



Specifications

INPUT

Voltage range	9-18V, 18-36V, 36-72V.
Isolation	1500VDC.
Filter	PI-type

OUTPUT

Power	5W and 7.5W.
Regulation	Line: $\pm 0.5\%$. Load: Single: $\pm 0.5\%$. 10% min load is required to meet specification. Dual: $\pm 1\%$. 20% min load is required to meet specification.

Setting Accuracy	$\pm 2\%$.
Ripple and noise	5 V: max. 90 mVp-p. 12/15 V: max. 1% p-p.
Short circuit protection	Fold-back. Approx 80% of output current at short circuit.
Temp coefficient	$\pm 0.05\%/^{\circ}\text{C}$.
Efficiency	70% to 82%.

ENVIRONMENTAL

Operating temperature	-25°C to $+71^{\circ}\text{C}$.
Storage temperature	-40°C to $+100^{\circ}\text{C}$.
Cooling	Convection.

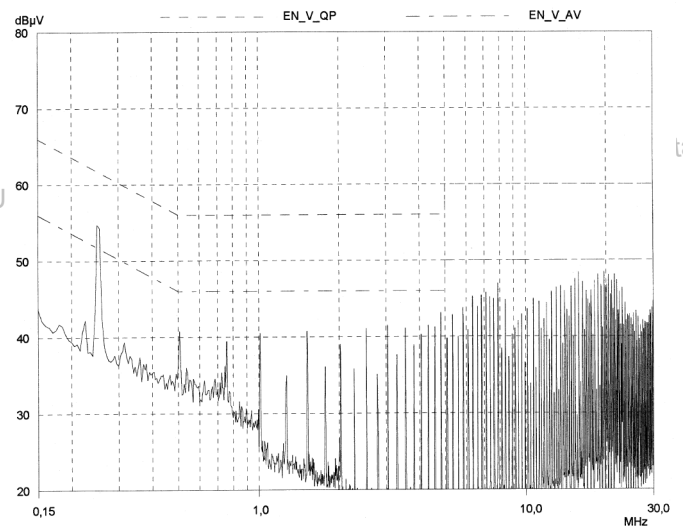
GENERAL

MTTF	200 000 hours at 25°C ambient.
Switching frequency	Min. 100 kHz.
Equivalent capacitance	650 pF.
Case	Black coated copper with non-conductive base.
Dimensions (H x W x L)	10.2 x 25.4 x 50.8 mm.
Weight	30g.

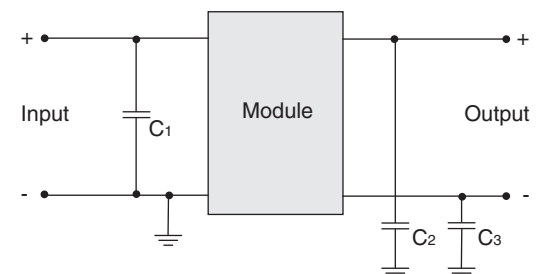
STANDARDS

RFI/EMI standards	EN55022 class B.
-------------------	------------------

CONDUCTED EMC, EN55022 LEVEL B



EMC TEST SETUP



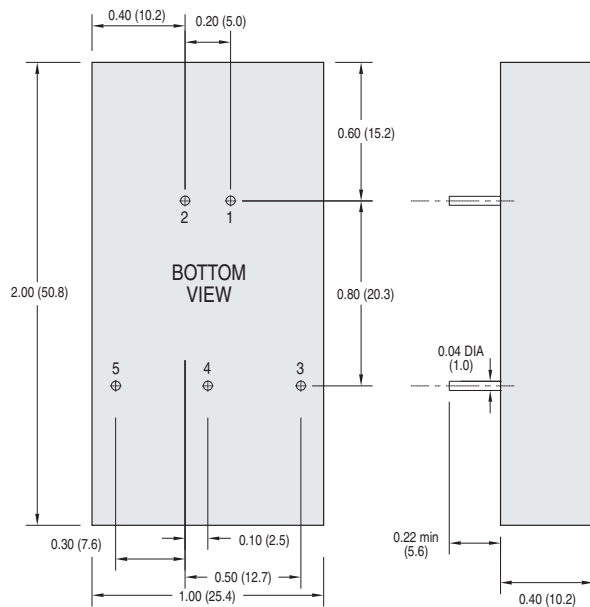
CAPACITOR	VALUE
C1	N/A
C2	10 nF
C3	10 nF

MAD 23 Series

5 - 7.5 W SINGLE & DUAL OUTPUT DC/DC INDUSTRIAL

POWERBOX ARTICLE NUMBER	INPUT VOLTAGE VDC	OUTPUT VOLTAGE VDC	OUTPUT CURRENT mA	INPUT CURRENT NO LOAD mA	INPUT CURRENT FULL LOAD mA
MAD 23 003	9-18	3.3	1500	7.5	590
MAD 23 006	9-18	5	1500	7.5	820
MAD 23 009	9-18	12	625	7.5	780
MAD 23 012	9-18	15	500	7.5	780
MAD 23 015	9-18	±5	750	7.5	820
MAD 23 018	9-18	±12	310	12	775
MAD 23 021	9-18	±15	250	12	780
MAD 23 024	18-36	3.3	1500	5	295
MAD 23 027	18-36	5	1500	5	400
MAD 23 030	18-36	12	625	5	380
MAD 23 033	18-36	15	500	5	380
MAD 23 036	18-36	±5	750	7.5	400
MAD 23 039	18-36	±12	310	7.5	385
MAD 23 042	18-36	±15	250	7.5	385
MAD 23 045	36-72	3.3	1500	3	147
MAD 23 048	36-72	5	1500	2	200
MAD 23 051	36-72	12	625	2	192
MAD 23 054	36-72	15	500	2	192
MAD 23 057	36-72	±5	750	3	200
MAD 23 060	36-72	±12	310	3	192
MAD 23 063	36-72	±15	250	3	192

DataSheet4U.com



All dimensions in Inches (mm)

PIN CONNECTION

PIN	FUNCTION
1	+V Input
2	-V input
3	+V Output
4	Common/NP
5	-V Output

NP = No pin.